

# FUNCTIONS & SECURITIES



## RUNNING FUNCTIONS

### About Functions

Functions are unique Bloomberg applications that provide analysis and information on securities, sectors, regions and more.

Each function is accessed by typing in its unique mnemonic (a short, memorable name) and then pressing the <GO> key.

**Example:** WEI is the mnemonic for the World Equity Indices analysis function. To access this function, enter **WEI <GO>**.



### Types of Functions

There are two types of functions:

» Non-security functions provide information or analysis on an entire market sector and do not require a loaded security.

**Example:** WEI is a non-security function because it provides information for dozens of equity indices on one screen. You can run WEI without loading a security by loading **WEI <GO>**, as shown above.

» Security-specific functions analyze a loaded security.

**Example:** GP (Graph Price) is a security-specific function because you must specify a security before graphing its price. You must load a security to run the GP function: **IBM US <EQUITY> GP <GO>**.

### Using Functions

There are two main way to run functions, depending on whether or not you know the function mnemonic.

# FUNCTIONS & SECURITIES



## If you know the function mnemonic:

- » Enter the function mnemonic in the command line.
- » Press the <GO> key.

The function runs on the active Bloomberg panel.

**Example:** In the command line, enter **WEI <GO>**.

## If you don't know the function mnemonic:

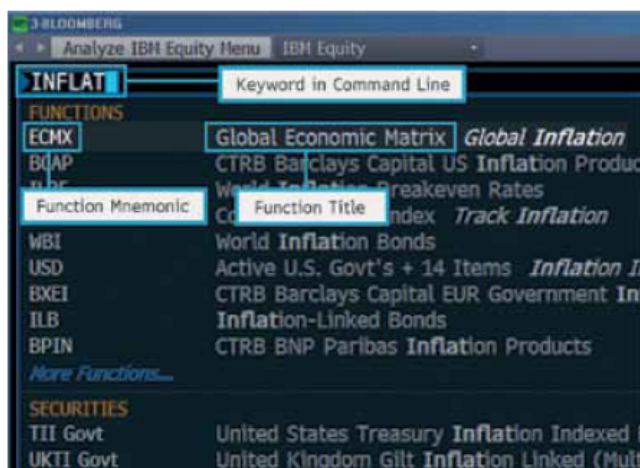
- » Type a keyword for the information you want in the command line.

As you type, Autocomplete provides a list of suggested functions.

- » Select the function you want to run from the list.

The function runs on the active Bloomberg panel.

**Example:** You want to find a function that analyzes inflation.



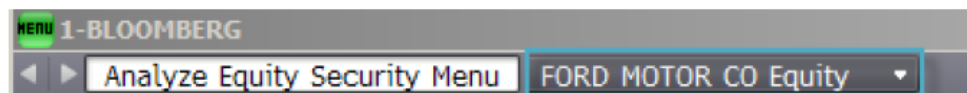
**Note:** If you are running a security-specific function, the security you want to analyze must be loaded before you run the function, which is covered in the next section.

## WORKING WITH SECURITIES

### About Securities

Securities are financial instruments—like stocks and bonds—that you can analyze with Bloomberg functions.

Once you have loaded a security on a panel, it appears in the loaded security field on the panel's toolbar.



You can run a series of functions to analyze the loaded security.

**Note:** The loaded security remains the active security on the panel until you load a different security.

### Loading Securities

There are three main ways to load a security—depending on whether or not you know the security's ticker symbol or identifier.

#### If you know the ticker symbol for the security you want to load:

- » Enter the ticker symbol in the command line.
- » Press the yellow market sector key corresponding to the security type (Corp, Muni, Equity, etc.).
- » Press <GO>.

The security appears as the loaded security in the active panel's toolbar.

**Example:** Using Ford Motor Company, enter **F <EQUITY> <GO>**

**If you know one of the widely used identification numbers for a security** (e.g., CUSIP, ISIN, BBGID):

- » Enter the security identification number in the command line.
- » Press the yellow market sector key corresponding to the security type (Corp, Muni, Equity, etc.).
- » Press <GO>.

The security appears as the loaded security in the active panel's toolbar, and a categorized menu of security-specific analysis functions appears.